

Seal
xpert®

PRODUCT CATALOGUE

EPOXY PUTTIES AND COATINGS





SealXpert® Products

Engineered Industrial MRO Solutions

SealXpert® Products is an ISO certified company. We offer a range of proven maintenance and repair products that are unique in pipeline service. Our products received accreditation from American Bureau of Shipping (ABS) and currently sold in more than 55 countries worldwide including Asia, Australia, Europe, Middle East, Africa, and North and South America.

Our range of maintenance and repair products are used for leak repair, corrosion protection, corrosion repair and reinforcement, parts repair and rebuilding, corrosion and wear coating, asset maintenance, fire protection, pipeline rehabilitation, etc. Each of the products is engineered to be applied on many applications. These products eliminate or minimize the cost of plants and equipment downtime.

Our products are applied across wide industries including oil and gas, offshore, petrochemical, chemical, marine, power generation, pulp and paper, mining and metals, pharmaceutical, semiconductor and electronics, manufacturing and processing, water and waste water, buildings and facilities maintenance.



TABLE OF CONTENTS

EPOXY PUTTIES AND COATINGS	
Seal Stic® Quick Cure Epoxy Sticks	1
SealXpert® Metal Repair Putty	1-2
SealXpert® Wear and Corrosion Resistant Coating and Putty	3
SealXpert® Marine Chock	3
SealXpert® Epoxy Coating	4
SealXpert® Repair Liquid and Putty	4
Application Photos	5




Seal Stic® Quick Cure Epoxy Sticks

Product	Features	Application
SS102 Steel Epoxy Stick (114 gram/tube)	<ul style="list-style-type: none"> • Pre-mixed steel-based formulation • Can be drilled, tapped, machined or painted • Non-toxic and solvent-free 	<ul style="list-style-type: none"> • Bonds to dry surfaces • Bonds to metals, concrete and plastics • Cures at room temperature
SS103 Aluminium Epoxy Stick (114 gram/tube)	<ul style="list-style-type: none"> • Pre-mixed aluminium-based formulation • Can be drilled, tapped, machined or painted • Non-toxic and solvent-free 	<ul style="list-style-type: none"> • Repairs to non-rusting aluminium castings, machinery and equipment • Fills porosity in aluminium castings
SS104 Bronze Epoxy Stick (114 gram/tube)	<ul style="list-style-type: none"> • Pre-mixed bronze-based formulation • Can be drilled, tapped, machined or painted • Non-toxic and solvent-free 	<ul style="list-style-type: none"> • Bonds securely to bronze, brass & copper alloys
SS106 Underwater Epoxy Stick (114 gram/tube)	<ul style="list-style-type: none"> • Pre-mixed ceramic-based formulation • Can be drilled, tapped, machined or painted • Non-toxic and solvent-free 	<ul style="list-style-type: none"> • Suitable for moist and wet conditions • Excellent resistance to oil and chemicals • Bonds to metallic and non-metallic surfaces



SealXpert® Metal Repair Putty

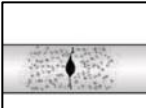
Product	Features	Application
PS102 Steel Repair Putty (A) (454 grams/set) 	<ul style="list-style-type: none"> • Metal-filled two-component epoxy putty • Bonds to metals, concrete and plastics • Cures at room temperature • Excellent resistance to oil, gasoline, water and chemicals • Ideal for patching and repairing areas where welding or brazing is undesirable • Can be drilled, tapped, machined or painted 	<ul style="list-style-type: none"> • Suitable for repairing defects and rebuilding of steel and iron casting parts • Recommended for repairing and rebuilding of worn components such as bearing and fan housing
PS103 Aluminium Repair Putty (454 grams/set)	<ul style="list-style-type: none"> • Aluminium -filled two-component epoxy putty • Repairs to non-rusting aluminium castings, machinery and equipment • Excellent resistance to chlorofluorocarbons • Bonds to aluminium and other metals • Fills porosity in aluminium castings • Can be drilled, tapped, machined or painted 	<ul style="list-style-type: none"> • Used for rebuilding of various aluminium casting parts • Used for repairing aluminium casting air holes and sand holes, shrinkage and cracks • Used for filling oversize, scratch or damaged repairing • Applicable to general machines, automobiles, airplanes, watercraft etc.
PS104 Bronze Repair Putty (227 grams/set)	<ul style="list-style-type: none"> • Bronze -filled two-component epoxy putty. • Repairs to bronze and brass bushings, shafts, castings and parts • Repairs and rebuilds area where brazing is undesirable or impossible • Bonds securely to bronze alloys, brass, copper and ferrous metals • Can be drilled, tapped, machined or painted 	<ul style="list-style-type: none"> • Used for rebuilding and repairing of various bronze casting parts • Used for repairing bronze casting air holes and sand holes, shrinkage and cracks • Used for filling oversize, scratch or damaged repairing • Applicable to watercrafts, machines, automobiles, mining machineries etc.
PS105 Stainless Steel Repair Putty (454 grams/set)	<ul style="list-style-type: none"> • Stainless steel-filled two-component epoxy putty • Patch, repair and rebuild stainless steel parts and equipment • Bonds to ferrous and non-ferrous metals • Non-rusting • Can be drilled, tapped, machined or painted 	<ul style="list-style-type: none"> • Used for repairing stainless steel and steel parts defect repairing and worn part rebuilding • Applicable to watercrafts, machines, automobiles, mining machineries etc.


SealXpert® Metal Repair Putty

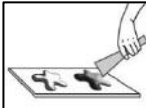
Product	Features	Application
PS106 Underwater Repair Putty (454 grams/set)	<ul style="list-style-type: none"> Ceramic-based two-component epoxy putty. Suitable for moist and wet conditions Excellent resistance to oil and chemicals Bonds to metallic and non-metallic surfaces Fills porosity and cracks on valves and pump bodies Can be drilled, tapped, machined or painted 	<ul style="list-style-type: none"> Used for repairing pipeline, valve, pump shell, tank body and concrete under emergency Used for leakage stopping for water machineries, watercrafts repairing, mines and buildings etc. Used in splash zone repair in combination of SealXpert® Fiberglass Repair Tapes
PS107 5 Min (SF) Repair Putty (454 grams/set)	<ul style="list-style-type: none"> Fast-curing Stainless steel-filled two-component epoxy putty Suitable for quick and emergency repairs Cures in less than one hour Can be drilled, tapped, machined or painted 	<ul style="list-style-type: none"> Used for emergency and quick repairing of steel, iron, stainless steel etc. metal damaged parts, worn parts and leakage Applicable to watercrafts, machines, automobiles, mining machineries etc.
PS108 Hi-Temp Repair Putty (454 grams/set)	<ul style="list-style-type: none"> Withstands high temperature up to 230 °C (446 °F) (continuous) and 280 °C (536 °F) (intermittent) Nickel alloy-filled two-component epoxy putty Suitable for engine parts repairs Can be drilled, tapped, machined or painted 	<ul style="list-style-type: none"> Used for repairing abrasion, scratch, and crack etc. on equipment operating at high temperature Applicable to watercrafts, automobiles, machineries in petrochemical, power plant etc.
PS109 Supermetal Epoxy Putty (454 grams/set) / PS109A Supermetal Epoxy Putty (908 grams/set)	<ul style="list-style-type: none"> Alloy and ceramic filled two-component epoxy putty Excellent hardness Cold welding repairing material Versatile durable repair composite Outstanding adhesion to all metals Excellent corrosion resistance Superior chemical resistance Can be drilled, tapped, machined or painted 	<ul style="list-style-type: none"> Suitable for repairing worn rotating shafts Applicable for making repairs that can be precision machined
PS110 Titanium Repair Putty (454 grams/set)	<ul style="list-style-type: none"> Titanium filled two-component epoxy putty High performance Excellent chemical resistance Withstands heavy loads in harsh chemical environments Can be drilled, tapped, machined or painted 	<ul style="list-style-type: none"> Suitable for repairing and rebuilding on load bearing components Applicable for repairs to machineries and equipment that can be precision machined

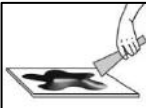


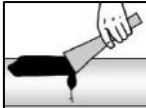
SealXpert® Repair Putty and Coating Application Procedure:

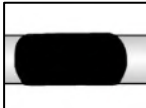
- 

1. Clean surface thoroughly with solvent
- 

2. Prepare surface to SSPC SP3 Standard. Clean the surface again with solvent
- 

3. Mix component A (Resin) and component B (Hardener) in accordance to the specified ratio
- 

4. Continuously scrape material from the sides and bottom of container until uniform, streak-free consistency is obtained
- 

5. Dispense the mixture to prepared container surface with trowel
- 

6. Allow curing in accordance to the minimum curing time at room temperature before operation

SealXpert® Wear and Corrosion Resistant Coating and Putty

Product	Features	Application
WR204 Wear Resistant Coating (500 gram/set)	<ul style="list-style-type: none"> Ceramic microsphere and silicon alloy filled two-component epoxy coating Suitable for application on vertical surfaces Coating has strong adhesion and excellent properties of wear and impact resistance 	<ul style="list-style-type: none"> Designed to rebuild and pre-protect the machine worn by whirlpool, corrosion and cavitation erosion, water pump impellers, shell, induced-draft fan impeller etc.
WR206 Wear Shield Brushable Coating (Large Particles) (5 kg/set)	<ul style="list-style-type: none"> Alumina ceramic bead-filled epoxy system Outstanding abrasion resistance Designed for particulates larger than 3mm (1/8") Resistant to wide range of chemicals (acids, bases, saturated salt solutions, oils, etc.) Service temperatures up to 150°C (302°F) 	<ul style="list-style-type: none"> Repair scrubbers, ash handling systems, pipe elbows, screens, and chutes Recontour chippers, bins, hoppers, bunkers, separators, diester tables Protect exhausters, chutes, launderers, housing fans, crushers, and breakers
WR208 Wear Shield Brushable Coating (Small Particles) (5 kg/set)	<ul style="list-style-type: none"> Micro-alumina ceramic bead-filled epoxy Outstanding abrasion resistance Designed for particulates smaller than 3mm (1/8") Resistant to wide range of chemicals (acids, bases, saturated salt solutions, oils, etc.) Service temperatures up to 150°C (302°F) 	<ul style="list-style-type: none"> Dust particulate applications including slurry pumps, scrubbers, screens, and screw conveyors
WR209 Corrosion Brushable Coating (3.8 litres/set)	<ul style="list-style-type: none"> Excellent chemical resistance to acids, solvents, and alkalis Temperature resistance to 160°C (320°F) Applies easily with short-bristle brush or roller Low viscosity, self-leveling liquid 	<ul style="list-style-type: none"> Seal and protect new equipment exposed to erosion and corrosion Protect pump casings, impeller blades, gate valves, water boxes, and fan blades Rebuild heat exchangers, tube sheets, and other water circulating equipment Top coat for providing exceptionally smooth surface to repaired surfaces
WR210 Carbide Putty (500 gram/set)	<ul style="list-style-type: none"> Silicon carbide-filled epoxy putty Economical protection against wear and abrasion Designed for particulates smaller than 1.6mm (1/16") Service temperatures up to 150°C (302°F) 	<ul style="list-style-type: none"> Particulate less than 1/16": pipe elbows, pulverizers and slurry lines, cyclones and exhauster fans, chutes
WR211 Corrosion Resistant Coating (500 gram/set)	<ul style="list-style-type: none"> Composed of modified epoxy, wear resistant ceramic and crystal mineral powder Thixotropic viscosity, suitable for application on vertical surface Excellent resistance to strong alkali and acid 	<ul style="list-style-type: none"> Used for rebuilding and protecting metal material and concrete facilities against corrosion of acid/alkali solution Rebuilding and protective coating of various corroded pipeline, pump, valve, exchanger, etc.



SealXpert® Marine Chock

Product	Features	Application
MC38 Marine Chock (4 litres/set)	<ul style="list-style-type: none"> Application versatility Withstands temperatures up to 121°C Self-leveling, fast curing, non-shrinking Excellent chemical and vibration resistance Excellent compression strength 100 % solids epoxy system Allows flow into hard to reach areas 	<ul style="list-style-type: none"> Specifically developed for chocking marine main propulsion and auxiliary machinery. Other shipboard applications include sterntube and strut bearings, pintle and rudder bearings, pedestal bearings, steering gears, stern winches, engine room pumps, cargo pumps, cable penetrations, large ball or roller bearings, bow thrusters and anchor windlasses



SealXpert® Epoxy Coating

Product	Features	Application
NS38 Anti-Slip Floor Coating (3.8 litres/set)	<ul style="list-style-type: none"> Two-component Epoxy Resin Coating designed for application in areas of heavy pedestrian traffic or light rolling traffic under typical dry service temperatures of -29°C to 60°C (-20°F to 140°F) Easy and fast to apply by paint brush or roller Reduces accidents (slips and falls) in the workplace Fire retardant in the cured state Resists gasoline, oil, acids, alkalis and aliphatic solvents Available in yellow, grey or green 	<ul style="list-style-type: none"> Typical applications include a non-slip finish for concrete and steel ramps, walkways, locker rooms, loading docks, marine applications, machine rooms assembly areas and stairs
EFC38 Epoxy Floor Coating (3.8 litres/set)	<ul style="list-style-type: none"> Two-component epoxy floor and deck coating Easy and fast to apply Fire retardant in the cured state Resists gasoline, oil, acids, alkalis and aliphatic solvents 	<ul style="list-style-type: none"> Finish for concrete and steel ramps, walkways, locker rooms, loading docks, marine applications, machine rooms assembly areas and stairs
ACC10 Anti-Corrosive Epoxy Coating (10 litres/set)	<ul style="list-style-type: none"> Two-component High adhesion strength Excellent alkali and acid resistance 	<ul style="list-style-type: none"> FRP storage tanks, pipes, vessels, ducts, and on-site maintenance projects, particularly in chemical processing, pulp and paper operations, including chlorine dioxide bleaching towers.
ACU10 Underwater Epoxy Coating (10 litres/set)	<ul style="list-style-type: none"> Two-component epoxy repair compound Provides a rock-hard protective surface Provides excellent protection against corrosion of metals and erosion and deterioration of concrete or wood 	<ul style="list-style-type: none"> Designed to be applied in underwater and splash zone environments Repair boat hulls, buoys, seawalls, docks, bridge abutments, etc.



SealXpert® Repair Liquid and Putty

Product	Features	Application
PL102 Steel Repair Liquid (500 gram/set)	<ul style="list-style-type: none"> Steel filled, liquid epoxy Low viscosity, self-levelling liquid Castable Machinable to metallic finish Low shrinkage Resistant to chemicals and most acids, bases, solvents and alkalis 	<ul style="list-style-type: none"> Casting of steel components Holding fixtures for intricate parts Filling and levelling equipment Repairing hard to reach areas where a flowable epoxy is needed Duplicating or tracing masters Short run dies and moulds
PL103 Aluminium Repair Liquid (500 gram/set)	<ul style="list-style-type: none"> Aluminium filled pourable epoxy Can be machined, drilled, or tapped 	<ul style="list-style-type: none"> Casting of aluminium components Used for mould-making, patterns, holding fixtures, levelling equipment
PL104 Rubber Repair Liquid (500 gram/set)	<ul style="list-style-type: none"> High initial bonding strength Good toughness Curing at room temperature Can be operated under low loading within 2 hours after bonding 	<ul style="list-style-type: none"> Designed to bond joint of fabric enforced multilayer rubber conveyor belt for metallurgy, building material, electric power, coal mine etc. industries Can be used to bond rubber, leather, metal and ceramic to each other or to themselves
PL105 Rubber Repair Putty (350 gram/set)	<ul style="list-style-type: none"> Fast curing at room temperature Non-toxic after cured Good flexibility High tensile strength High tearing strength Good abrasion, corrosion, aging and impact resistance 	<ul style="list-style-type: none"> Repairing and bonding of worn fabric joints Fill joint gaps Reinforce rubber conveyor belts in metallurgy, power, coal mining, etc. industries



Application Photos

Seal Stic® Quick Cure Epoxy Sticks

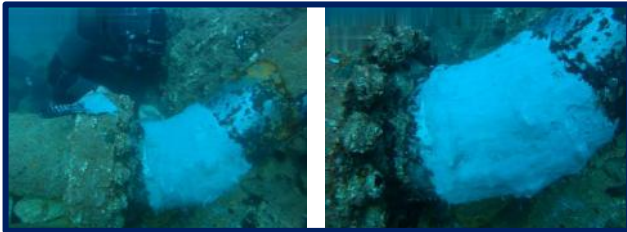


Application of Seal Stic® on exterior of pump housing



Application of Seal Stic® SS106 Underwater Epoxy Stick on FRP pipe

SealXpert® Metal Repair Putty



Application of SealXpert® PS106 Underwater Repair Putty in subsea

SealXpert® Repair Liquid and Putty



Application of SealXpert® PL104 Rubber Repair Liquid

SealXpert® Wear and Corrosion Resistant Coating and Putty



Application of ceramic putty on fan impeller



Application of ceramic putty on pump housing



Application of ceramic putty on fan blades



Application of ceramic putty on pump housing

SealXpert® Marine Chock



Application of SealXpert® Marine Chock on engine foundation plate



Application of SealXpert® Marine Chock on motor foundation plate

ENGINEERED INDUSTRIAL MRO SOLUTIONS

LEAK REPAIR | CORROSION REPAIR AND REINFORCEMENT | CORROSION PROTECTION |
EPOXY PUTTIES AND COATINGS | SEALANTS AND ADHESIVES | SPECIAL LUBRICANTS |
AEROSOLS | CLEANING CHEMICALS | FIRE PROTECTION



SealXpert® Products

 mailbox@sealxpert.com

 www.sealxpert.com

